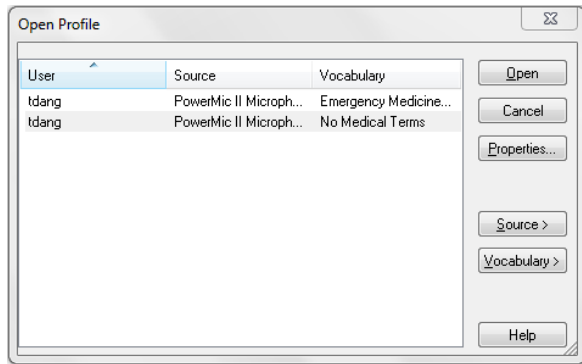


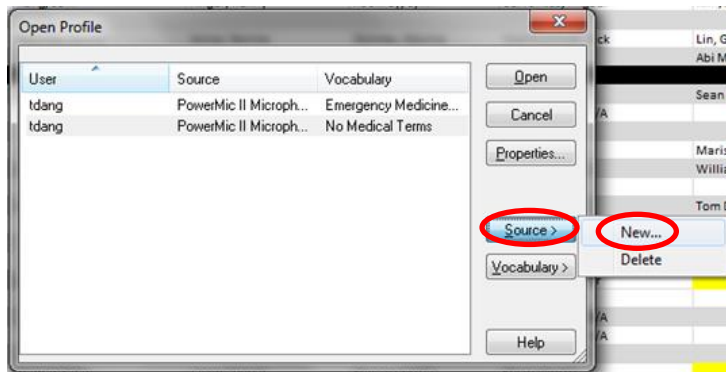
DRAGON: ADDING THE ANDREA MIC

(Please plug in the mic to the computer before launching Dragon)

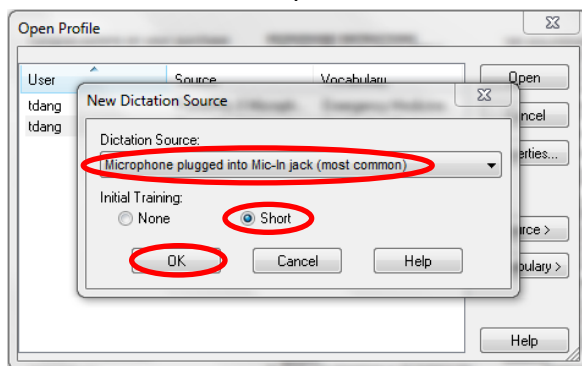
- When you first log in to Dragon, you will see the following screen:



- Click on “Source” and then “New”:



- Keep the defaulted “Microphone plugged into Mic-in jack” (DO NOT SELECT ANDREA SUPERBEAM):
 - *You will have to complete the “General Training” for this new source:



- Next time you log in, you will have to select the profile with the correct Vocabulary and Source and click “Open”:

